

Chair of Materials Science and Nanotechnology

<https://nano.tu-dresden.de>

Free & helpful IT-services from TU Dresden

Steffen Kampmann

Introduction

The ZIH is the IT department of the TU Dresden and takes care of all IT services. Every student and employee has his/her own ZIH login, with which he/she can access the various IT services of the TU Dresden or the ZIH.

All settings regarding your ZIH login can be found in the Self-Service Portal of the TU Dresden:

<https://selfservice.tu-dresden.de/>

Here you can also find a list of all IT services offered by the ZIH.

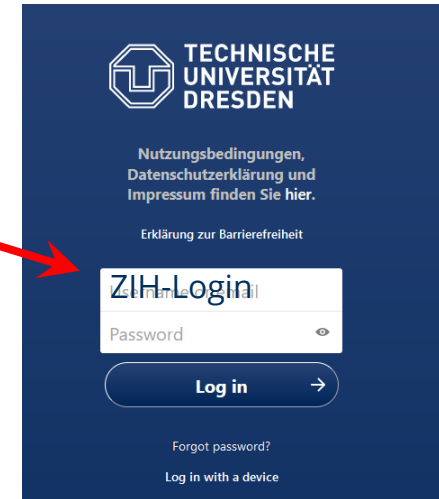
Anti virus

- Install Sophos as anti virus software on your office PC/Mac
- For Windows you can use *Endpoint Security and Control*

https://tu-dresden.de/zih/dienste/service-katalog/arbeitsumgebung/dir_software/softwareliste/virenschutz/sophos/index?set_language=en

Cloudstore

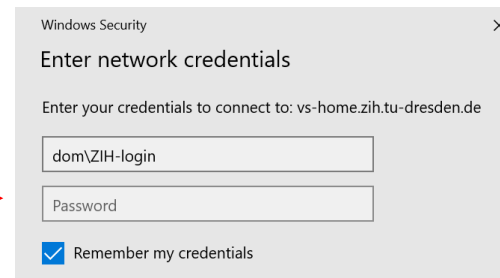
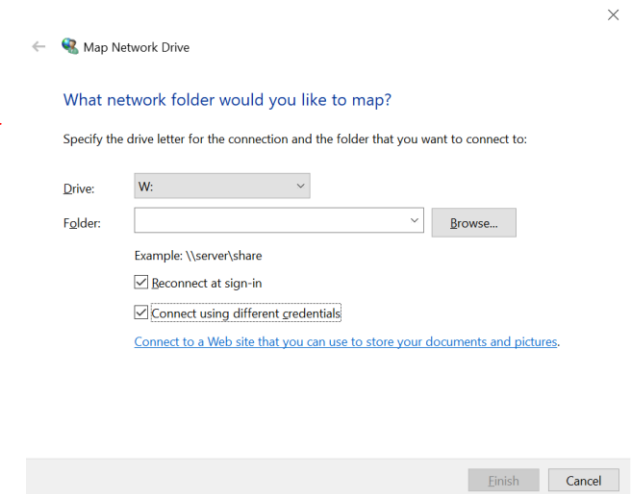
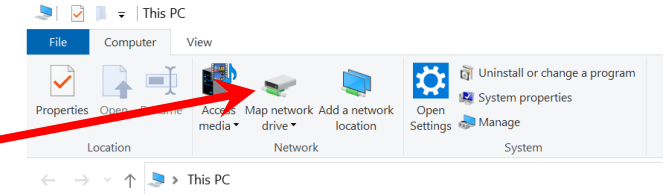
- For your research data which belongs to university you are not allowed to use external clouds, i. e. **Google**, **Microsoft** , **Apple** or **Dropbox** services
- For sharing your Data you can use the cloudstore service from ZIH:
 - <https://cloudstore.zih.tu-dresden.de>
- Reachable from everywhere? **Yes**
- Shareable with internal and external persons? **Yes**
- How to use? Browser, Apps → <https://nextcloud.com/install/#install-clients>
 - Short manual for App: <https://tu-dresden.de/zih/dienste/service-katalog/zusammenarbeiten-und-forschen/datenaustausch/cloudstore>



If you need a storage expansion, write to servicedesk@tu-dresden.de

Home-Directory

- Backuped personal data system
- Only available within TU-Network
- Type „This PC“ in your Windows-Search
- Then click in top menu on computer tab and then connect to network drive
- Then use any letter and type to the „Folder“-field
`\\vs-home.zih.tu-dresden.de\ZIH-login`
- After that you have to type username and password:
username: `dom\ZIH-login`
password: *password of ZIH-Login*

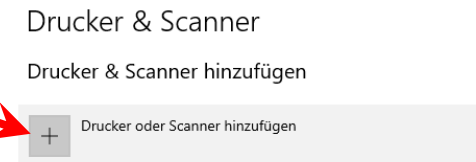
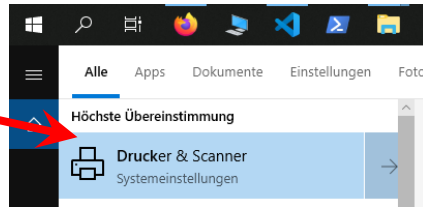


- More info: <https://tu-dresden.de/zih/dienste/service-katalog/arbeitsumgebung/datenspeicher/details#section-1>

If you need a storage expansion, write to servicedesk@tu-dresden.de

Internet, Wi-fi, Printer

- For working use the LAN-Cables because then you are in the internal TU-Netzwerk
- For any other purpose you can use the eduroam-Netzwerk
 - You can follow the following manual:
 - <https://faq.tickets.tu-dresden.de/otrs/public.pl?Action=PublicFAQSearch;Subaction=Search;Keyword=eduroam>
- Only if you connected with the LAN-Cables you can use the network printer in MBZ or HAL
 - Type „Drucker“ or „Printer“ (depends on your system language) in the windows search
 - Click on it
- Then click on „Drucker oder Scanner hinzufügen“
- After that it takes few seconds up to few minutes until you can select a the printer
→ Choose it!



Now you can print via network!

VPN

- You need VPN of TU Dresden to connect to the TU Dresden network from outside
 - For example:
 - You can choose your home directory from everywhere
 - You have TU Dresden related paper access from everywhere
- You can use a installed VPN-Client on your PC/Laptop/Smartphone or you can access via WebVPN
 - https://tu-dresden.de/zih/dienste/service-katalog/arbeitsumgebung/zugang_datennetz/vpn/webvpn
- For connection to your home directory you need a installed VPN-Client
- It doesn't matter whether you install the OpenVPN or Cisco client
 - https://tu-dresden.de/zih/dienste/service-katalog/arbeitsumgebung/zugang_datennetz/vpn/ssl_vpn

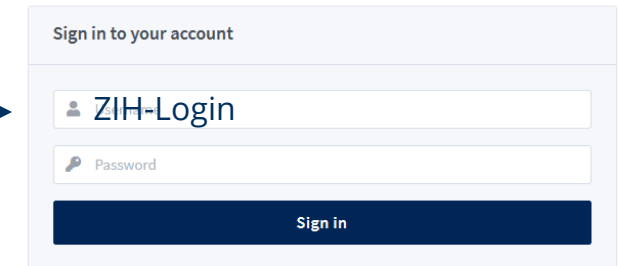
Videoconference systems - Zoom

An overview of TU Dresden supported softwares: <https://tu-dresden.de/zih/dienste/videokonferenz>

- Go to <https://tu-dresden.zoom.us/> and sign in
- As employee of TU Dresden you have access to your own Zoom premium account
- Account configuration:
 - You will find your personal meeting room under **Profile → Meeting**
 - There you will find your personal link to share
 - To find the password for personal room or to delete password go to **Meetings → private room** and then click on edit
 - Then you can choose between password and waiting room as security options

Videoconference systems – BigBlueButton

- Very widely usage of BigBlueButton: https://bbb.tu-dresden.de/b/ldap_signin
- It is completely web based system → you don't need to install anything
- Every employee can create rooms for different events (maximum of persons is 50)
 - These rooms have a **constant** link and only opened if you are inside
- It is sharable with internal and **external** persons

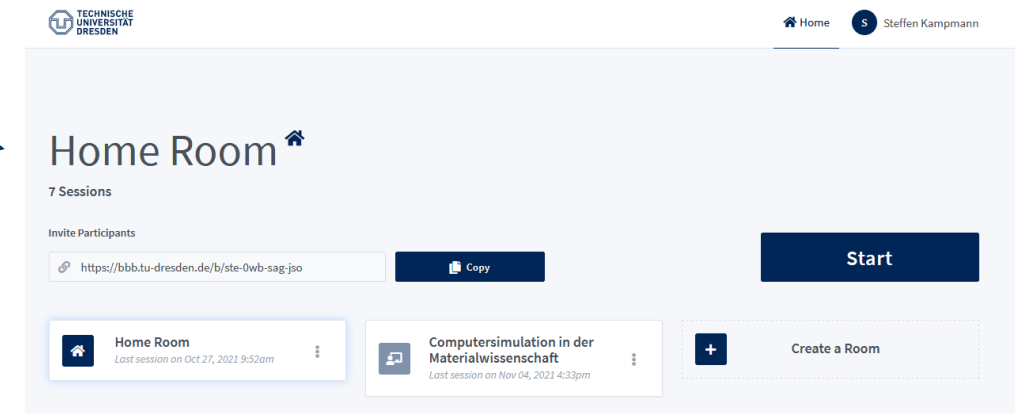


Sign in to your account

ZIH-Login

Password

Sign in



TECHNISCHE UNIVERSITÄT DRESDEN

Home Room

7 Sessions

Invite Participants

<https://bbb.tu-dresden.de/b/stc-0wb-sag-jso> Copy

Start

Home Room
Last session on Oct 27, 2021 9:52am

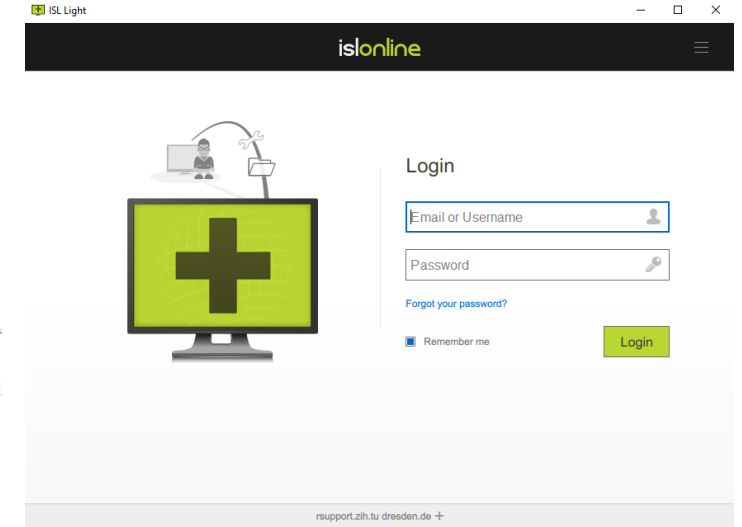
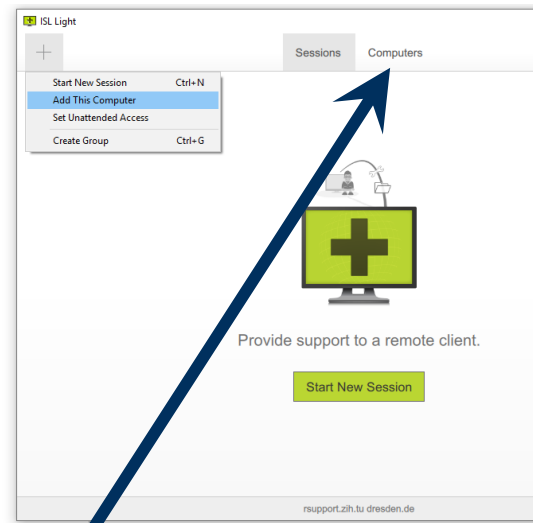
Computersimulation in der Materialwissenschaft
Last session on Nov 04, 2021 4:33pm

Create a Room

BigBlueButton: Whiteboard, screensharing, breakout rooms, polls, adjustable permissions for users

Remote Access Setup

- Download and install ISL Light to your office-PC (Computer 1)
 - <https://rsupport.zih.tu-dresden.de:7615/users/main/downloads.html>
- Login with you ZIH-Credentials →
- Click “Add this Computer” →
 - Windows ask you if you want to install ISL AlwaysOn
 - Click “Yes”
 - Now ISL AlwaysOn will run the whole time in background on this Computer 1 (also after restart)
- Download and install ISL Light to your second PC (Computer 2)
- Now you can connect from Computer 2 to this Computer 1 For this you need to click on Computer to see the computer you want to connect to



Collaborative Working

- The TU Dresden offers a free latex service like Overleaf
 - <https://tex.zih.tu-dresden.de/saml/login>
 - You can login with your ZIH-Credentials
- The TU Dresden also offers a free service for collaborative editing of Office documents
 - <https://sharepoint.tu-dresden.de/>
 - You can login with your ZIH-Credentials
 - You can also share documents with external persons

Free & prohibited Software

- TU Dresden offers free software licenses for students and employees
- Some of these software are allowed to be installed on the private PC (e. g. Office 365)
- A list for students: https://tu-dresden.de/zih/dienste/service-katalog/arbeitsumgebung/dir_software/studliz
- For example Matlab is free for students and employees <https://de.mathworks.com/academia/tah-portal/tu-dresden-40758619.html>

Prohibited software

- Teamviewer
- External cloudservices
- Software from external E-Mail provider

Installation of software

- Please only install software from trustworthy sources

If you are not sure please ask *robert.biele@tu-dresden.de* or *steffen.kampmann@tu-dresden.de*

Useful links

- You can use the following service to shorten any link to a TU internet address, e.g. the link of your BigBlueButton room. This link shortening is active for an unlimited period of time.
 - <https://tud.link/create/>
- Power Point template of TU Dresden
 - <https://tu-dresden.de/intern/services-und-hilfe/kommunizieren-und-publizieren/cd/vorlagen/digitales/digitales#>
- University library
 - <https://www.slub-dresden.de/>
- Language courses
 - <https://tu-dresden.de/gsw/slk/lsk/sprachen-fuer-alle-studiengaenge/einschreibung-ueber-lskonline#>
- Platform for teaching courses
 - <https://bildungsportal.sachsen.de/opal/>
- Applicant and student portal:
 - <https://selma.tu-dresden.de>